



KONICA MINOLTA

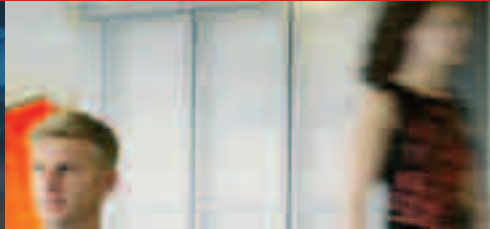
Office System Konica Minolta 130f



Konica Minolta 130f

The Heart of Your Office

The essentials of imaging



The Heart of Your Office

The Konica Minolta 130f is the innovative and efficient multifunctional device designed by professionals for professionals.

We made the Konica Minolta 130f with small offices and workgroups in mind. If you are looking for a wide range of imaging services without purchasing a wide range of office products, then the Konica Minolta 130f is the answer to your needs. Its many features are combined in one compact versatile and price conscious unit.



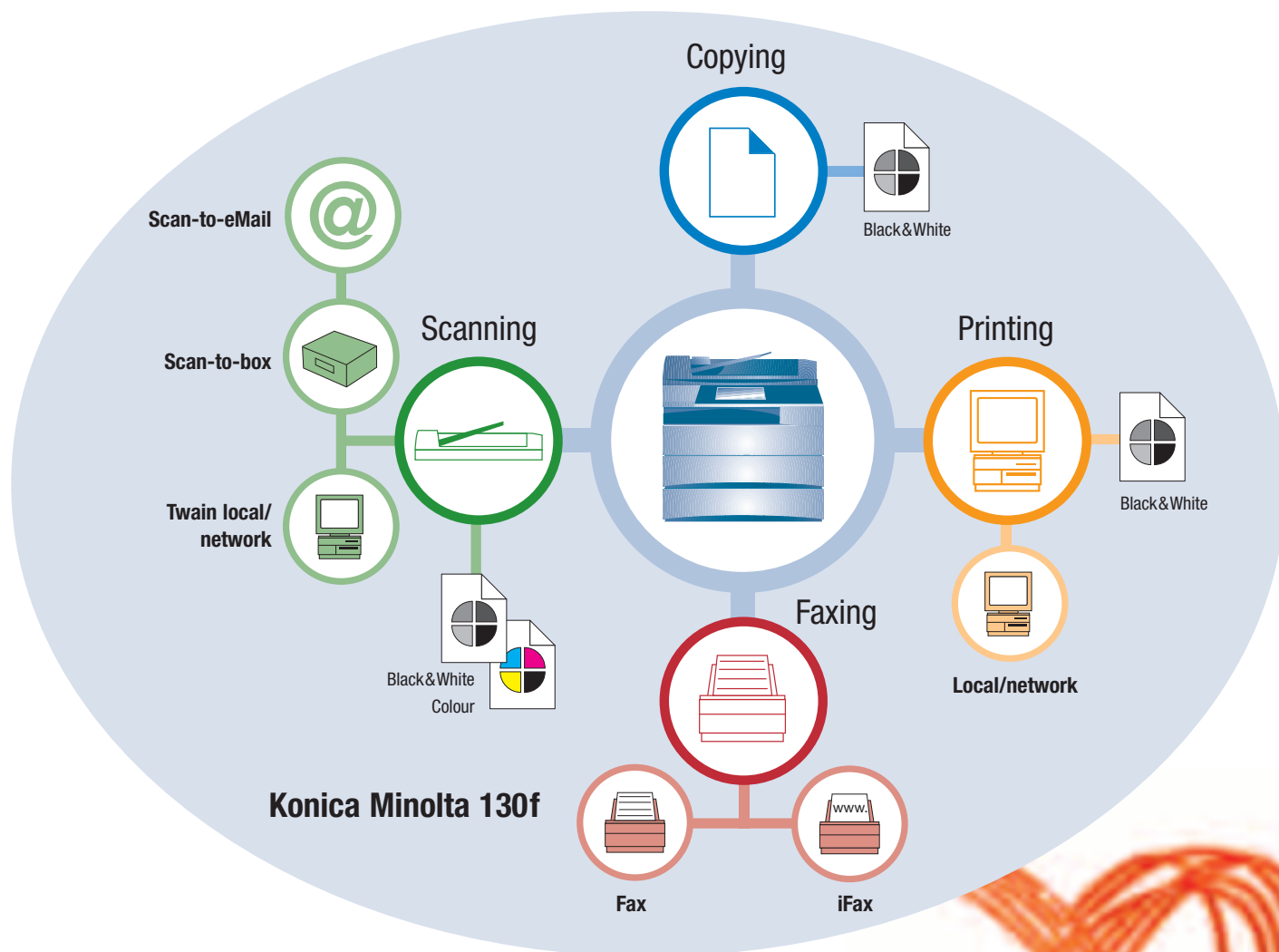
Information Circulation

The multifunctional Konica Minolta 130f gets to the heart of your imaging and communication needs:

Copy, print, scan, fax, iFax and scan-to-eMail. Its high-speed fax modem, 40 one-touch keys and 8 MB memory make the Konica Minolta 130f a fast and efficient office tool. Your images are just a heartbeat away from any global destination.

Innovation from the Heart





➔ The Heart of the Matter

The Konica Minolta 130f is built with proficiency and price consciousness in mind. It contains pioneering features and produces the quality copies our customers are used to.

New technologies provide for even higher efficiency and lower operating costs. For example:

- Our innovative Polymerized Toner means lower toner consumption, higher savings and better printing results.
- Fast fax transmissions reduce your telephone costs.
- iFax means no telephone charges at all.
- LED technology reduces noise in your office environment.
- The scan-to-box archives your documents, providing comfortable and timesaving handling and makes sharing of information easy via your network.
- Department codes make accounting more manageable.

And it's built to last.



Konica Minolta has its customers' interests at heart. The new 130f is an imaging system that increases efficiency and improves information circulation inside and outside your office. Thanks to new technologies and new ideas, we can offer new solutions to your imaging needs.

Konica Minolta gets to the heart of the matter.



KONICA MINOLTA

Technical specifications

Copier specifications

Copy speed A4

Up to 13 copies/min.

Copy resolution

Max. 600 x 600 dpi

1st copy

12 sec. (A4 crosswise)

Gradations

256 gradations

Magnification

25% - 400% in 1% steps via original glass

Multiple copy

1-99, countdown

Copy memory

Standard: 8 MB (650 pages)

Max.: 40 MB (3,370 pages)

Copy features

APS, AMS, auto cassette switching, job memory, electronic sorting, combine 2in1, department control

Printer specifications

(GDI standard)**Print speed A4**

Up to 13 prints/min.

Print resolution

Max. 600 x 600 dpi

Interface

USB 2.0
Parallel (IEEE1284)-optional
Ethernet (10/100Base-TX)-optional

Print memory

Standard: 8 MB

Max.: 40 MB

Operating system

Windows 95/98/SE/Me/2000/XP/NT4.0

Printer specifications (PCL optional)

Print speed A4

Up to 13 prints/min.

Print resolution

Max. 600 x 600 dpi

Page description language

PCL 5e, PCL 6

Interface

USB 2.0
Parallel (IEEE1284)-optional
Ethernet (10/100Base-TX)-optional

Print memory

Standard: 8 MB

Max.: 40 MB

Operating system

Windows 95/98/SE/Me/2000/XP/NT4.0

Print features

Transmit once, print many
RIP once, print many
Watermark
Layout (2-up, 4-up, 8-up)

Fax specifications

Fax transmission time

Less than 2 seconds (ITU no. 1)

Fax modem speed

Max. 33.6 kbps

Coding

MH, MR, MMR, JBIG

Fax memory

Shared with copier memory

Fax features

iFax, delayed transmission, broadcasting, polling, memory receiving

Scanner specifications

Scan speed

Up to 15 scans/min.

Scan resolution

Max. 600 x 600 dpi

Scan modes

TWAIN scan
Scan-to-box
Scan-to-eMail
Scan-to-iFax

Scan features

Colour scanning

System specifications

Automatic document feeder

Max. 80 sheets (75 g/m²)

Output paper size

A6 to A4

Paper weight

60-120 g/m²

Paper input capacity

Standard: 550 sheets

Max.: 1,050 sheets

Sheet bypass

Multi-bypass tray (max. 50 sheets)

Output capacity

Max. 250 sheets

Finishing modes

Electronic Sorting

Warm-up time

Less than 23 sec.

System dimensions (WxDxH, mm)

520 x 450 x 446

System weight

Approx. 20.8 kg



All specifications relating to paper capacity refer to A4-sized paper of 80 g/m² quality.

All specifications relating to scanning, copying or printing speeds refer to A4-sized paper that is scanned, copied or printed crosswise in multipage, simplex mode.

The memory capacities listed refer to A4-sized paper with the toner coverage detailed in the respective foot note.

Some of the product illustrations contain optional accessories.

Konica Minolta does not warrant that any prices or specifications mentioned will be error-free.

Specifications are subject to change without notice.

All brand and product names may be registered trademarks or trademarks of their respective holders and are hereby acknowledged.

Printed in UK.

Your Konica Minolta Business Solutions Partner:



**Konica Minolta
Business Solutions (UK) Ltd**

Dealer Operations

Precedent Drive, Rooksley,

Milton Keynes, MK13 8HF

Tel: 01908 200400

Fax: 01908 200378

www.konicaminolta.co.uk

